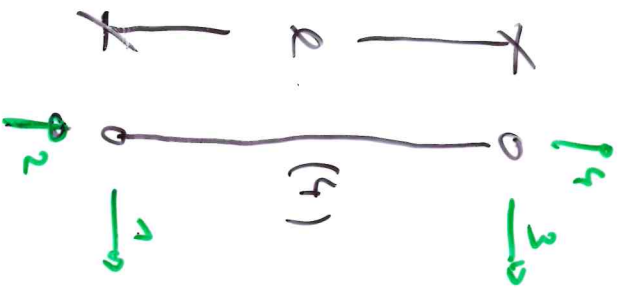
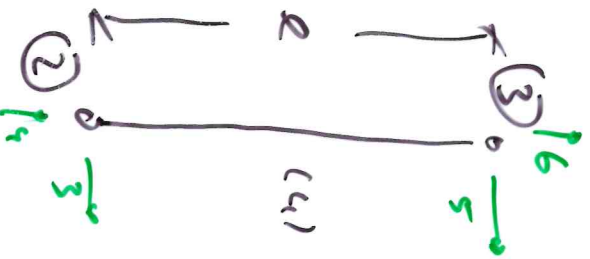


Element 4



Ex. 4 in der Struktur



$$\Delta x = 0, \quad \Delta y = e, \quad L_{(4)} = \sqrt{\Delta x^2 + \Delta y^2} = \dots = e$$

$$\rightarrow C = \frac{\Delta x}{L_{(4)}} = 0, \quad S = \frac{\Delta y}{L_{(4)}} = \frac{e}{e} = 1$$

$$\rightarrow [k_{(4)}] = \frac{EA}{e}$$

$$\begin{bmatrix} \cdot & \cdot & \cdot & \cdot \\ \cdot & 1 & \cdot & \cdot \\ \cdot & \cdot & \cdot & -1 \\ \cdot & -1 & \cdot & 1 \end{bmatrix}$$

→ Koordinaten Schema

e	1	2	3	4
(4)	3	4	5	6