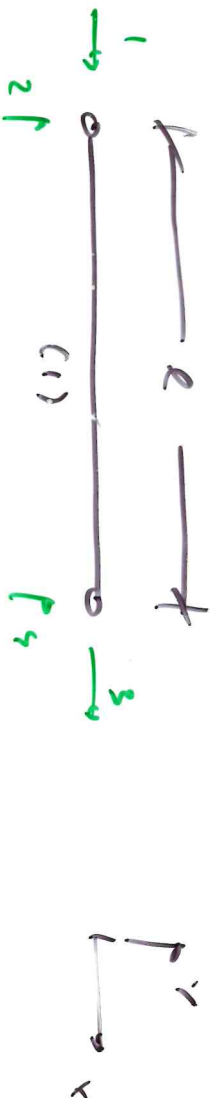


Stab 1

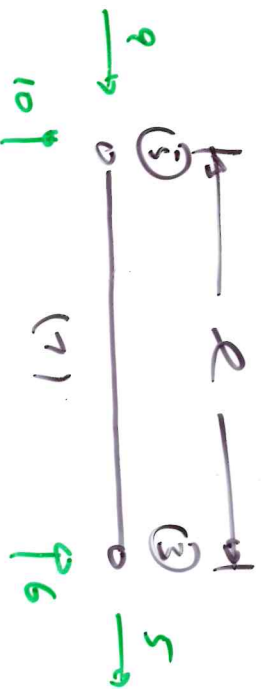


$$\Delta x = 2, \quad \Delta y = 0 \rightarrow e = \sqrt{\Delta x^2 + \Delta y^2} = \dots = 2$$

$$C = \frac{\Delta x}{e} = \frac{2}{2} = 1, \quad S = \frac{\Delta y}{e} = \frac{0}{2} = 0$$

$$[k_{(1)}] = \frac{EA}{e} \begin{bmatrix} +1 & \cdot & \cdot & -1 \\ \cdot & \cdot & \cdot & \cdot \\ -1 & \cdot & +1 & \cdot \\ \cdot & \cdot & \cdot & \cdot \end{bmatrix} = k_{ab}^{(1)}; \quad (a, b = 1 \dots 4)$$

in der Struktur gilt für den Stab:



Koordinaten scheme

e	1	2	3	4
(1)	9	10	5	6